

AECOM

PROJECT
**BALLIEMEANOCH
 PUMPED STORAGE
 HYDRO**

CLIENT
 ILI (Borders PSH) Ltd.

CONSULTANT
 AECOM Limited
 177 Bothwell Street
 Glasgow G2 7ER
 www.aecom.com

LEGEND

- ▬ Development Boundary
- ▭ Headpond
- Headpond Embankments
- Switching Station
- Permanent Construction Compound
- Temporary Construction Compound
- Upper Gate House
- Lower Gate House
- ▬ Tunnel Portals
- ▬ B840 Diversion - Permanent, New, Excavated
- ▬ B840 Diversion - Permanent, Upgrade, Excavated
- ▬ Spillway
- ▬ Access Track - Temporary, New, Excavated
- ▬ Access Track - Permanent, New, Excavated
- ▬ Access Track - Permanent, New, Floating
- ▬ Access Track - Permanent, Upgrade, Excavated
- ▬ Proposed Blarghour wind farm access track
- ▬ Borrow Pit
- ▬ Inlet/Outlet Structure



NOTES
 Reproduced from Ordnance Survey digital map data © Crown copyright 2024. All rights reserved. Licence number 0100031673.

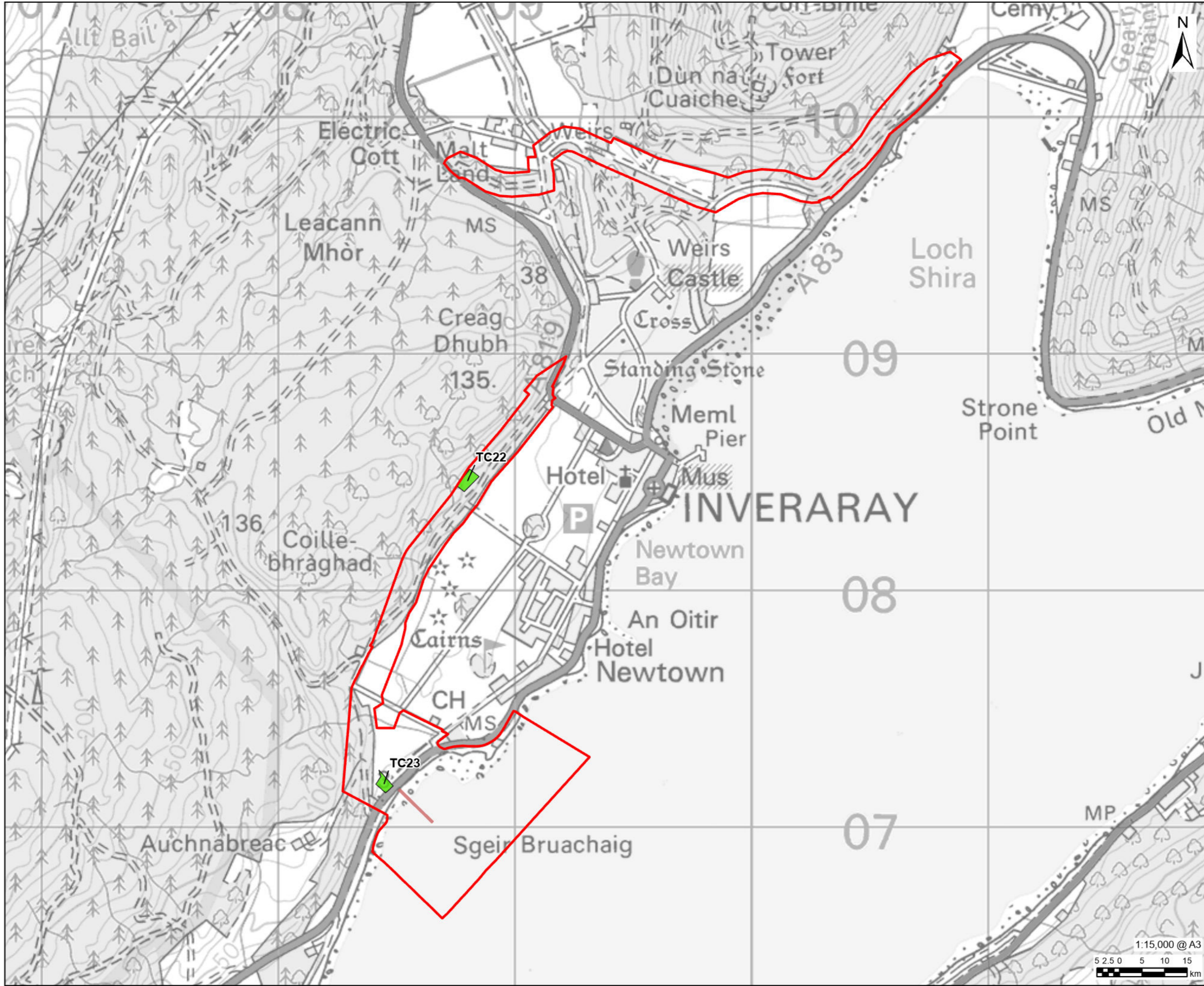
ISSUE PURPOSE
 FINAL

PROJECT NUMBER
 60570241

FIGURE TITLE
 Above Ground Infrastructure

FIGURE NUMBER
 Figure 2.3 (Sheet 1 of 2)

This drawing has been prepared for the use of AECOM's client. It may not be used, modified, reproduced or relied upon by third parties, except as agreed by AECOM or as required by law. AECOM accepts no responsibility, and denies any liability whatsoever, to any party that uses or relies on this drawing without AECOM's express written consent. Do not scale this document. All measurements must be obtained from the stated dimensions.



AECOM

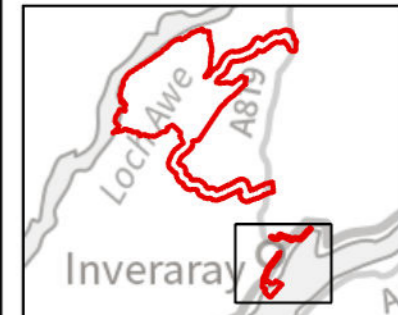
PROJECT
 BALLIEMEANOCH
 PUMPED STORAGE
 HYDRO

CLIENT
 ILI (Borders PSH) Ltd.

CONSULTANT
 AECOM Limited
 177 Bothwell Street
 Glasgow G2 7ER
 www.aecom.com

LEGEND

- Development Boundary
- Temporary Construction Compound
- Marine Facility



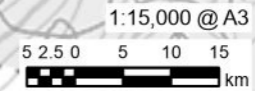
NOTES
 Reproduced from Ordnance Survey digital map data © Crown copyright 2024. All rights reserved. Licence number 0100031673.

ISSUE PURPOSE
 FINAL

PROJECT NUMBER
 60570241

FIGURE TITLE
 Above Ground Infrastructure

FIGURE NUMBER
 Figure 2.3 (Sheet 2 of 2)



This drawing has been prepared for the use of AECOM's client. It may not be used, modified, reproduced or relied upon by third parties, except as agreed by AECOM, or as required by law. AECOM accepts no responsibility, and denies any liability whatsoever, to any party that uses or relies on this drawing without AECOM's express written consent. Do not scale this document. All measurements must be obtained from the stated dimensions.